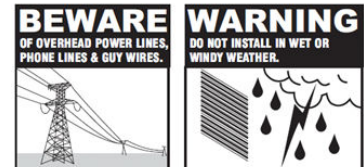


Symmetry Solar Panel Pole-Mount Kit Installation Guide

Please Ensure, **SAFETY AT ALL TIMES**



DO NOT INSTALL NEAR POWER LINES, TELEPHONE LINES AND GUY WIRES. THEY ALL LOOK THE SAME SO ASSUME ANY WIRE OR LINE CAN ELECTROCUTE YOU.

Introduction

Thank you for choosing the Symmetry solar panel pole-mount kit. These Symmetry pole-mount kits are compliant with the Australian / New Zealand Standard on Wind Actions (AS/NZS 1170.2:2011).

Please read these guidelines completely before proceeding

Model	Module Sizing
SY-PM-5-10W	5 & 10 Watt Symmetry Modules (up to 235mm wide)
SY-PM-20-30W	20 & 30 Watt Symmetry Modules (up to 355mm wide)
SY-PM-40-50W	40 & 50 Watt Symmetry Modules (up to 540mm wide)

They are intended for mounting on a 50mm diameter secured steel pole.

Whats included in the kit

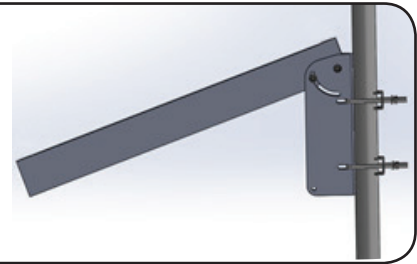
1. Part assembled pole mount and rail
2. Pole mount U bolt clamp kit (including nuts & washers)
3. 3x28mm end clamps (including hardware)

Mount Kit Assembly

The pole mount kit is already part assembled for easy installation.

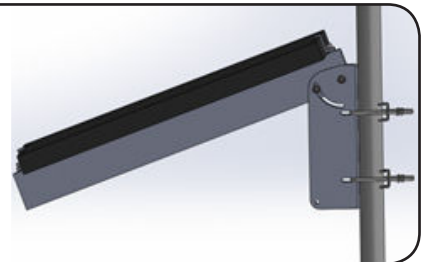
Step 1.

Locate the U bolt clamps on the pole mount bracket and mount into pole.



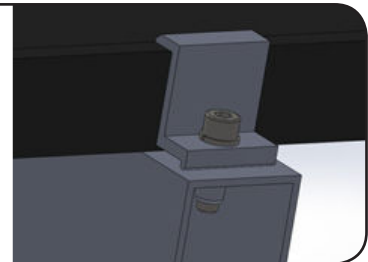
Step 2.

Locate the solar panel into the bottom clamp and then install the 2nd (top) bolt clamp. You can adjust the spacing on the clamps for a tight fit.



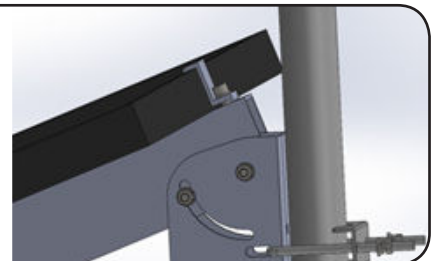
Step 3.

Once the solar panel is in the correct position, tighten both end clamps using a 6mm Allen key (not included)



Step 3.

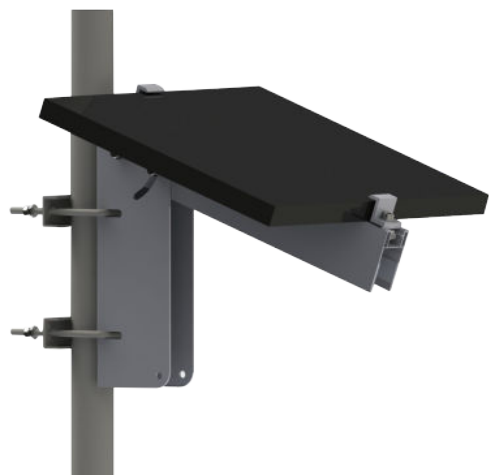
If not already done so, adjust solar panel to correct angle and tighten all bolts.



Final Adjustments

Once the pole kit/PV module assembly is attached to the pole, raise and rotate the assembly as needed. Never let the assembly slide down the pole. Torque the flange nuts on the U-bolt and channel bracket bolts to 30 foot-pounds. Torque the bracket/rail bolts to 30 foot-pounds (40 newton-metres).

Torque module bolts to 15 foot-pounds (20 newton-metres). If desired, install the self-tapping screws to permanently fix the angle of the pole kit/PV module assembly.



Wind Loads

The Symmetry solar panel pole mount kit has been assessed and rated to be in compliance with AS/NZS1170.2.2011 on Wind Actions as follows:

NB: The Wind Region has nothing to do with surrounding topography or buildings.

- Most of Australia is designated Region A which indicates a Region. Ultimate Basic Wind Velocity of 45msec.
- Some areas are designated Region B (57m/sec). Local authorities will advise if this applies in your area.
- Region C areas (66m/sec) are generally referred to as cyclonic and are generally limited to northern coastal areas. Most Region C zones end 100km inland.
- Region D (80m/sec) Australia's worst Cyclonic Region between Carnarvon and Pardoo in Western Australia.

Solar Panel Size	SY-PM-5-10M	SY-PM-20-30W	SY-PM-40-50W
250 x 185 x 25mm	Region A, B, C & D	n/a	n/a
335 x 235 x 25mm	Region A, B, C & D	n/a	n/a
430 x 345 x 25mm	n/a	Region A, B, C & D	n/a
605 x 345 x 25mm	n/a	Region A, B, C & D	n/a
550 x 505 x 25mm	n/a	n/a	Region A, B, C & D
650 x 505 x 25mm	n/a	n/a	Region A & B

*Installed at a maximum height of 5 metres.

AS/NZS1170.2.2011 provides guidance on determining the wind pressures applicable to your Symmetry installation site, taking in local terrain and topography. Sufficient guidance is given in this document, but you may wish to procure a copy of these standards if your company installs Australia wide.

Any attempt by an unqualified person to install this product could result in death or serious injury.

Handling

The materials used in the Symmetry frame can have sharp corners or edges. Wear personal protective equipment such as safety glasses, hearing protection and gloves during handling.

* Installed at a maximum height of 5 metres.

Warranty

1. The benefits provided to you under this warranty are in addition to any other rights or remedies you may have, as a consumer, under any other law which applies to RFI products. RFI goods come with guaranties that cannot be excluded under the Australian Consumer Law. You are entitled to a replacement or refund for major failure and for compensation for any reasonably foreseeable loss or damage. You are entitled to have the goods repaired or replaced if the goods fail to be of acceptable quality and the failure does not amount to a major failure.
2. Under this warranty RF Industries agrees to repair or replace the product, at RF Industries cost, purchased by you in Australia if the product does not perform in accordance with the manufacturers specifications during the period of this warranty.
3. The Symmetry solar panel pole mount kits warranty is valid for a period of 2 years from the original date of purchase. Please retain your proof of purchase, as this will need to be provided should you wish to claim under this warranty.
4. To be able to claim under this warranty you must:
 - Ensure the product is installed by a suitable qualified person and is installed in accordance with the manufacturer's instructions or as detailed in the user guide and any applicable Australian Standard. You must be able to provide proof of this if required by RF Industries.
 - Is operated in accordance with the manufacturer's instructions or as detailed in the user guide.
 - Is maintained in accordance with the manufacturer's instructions or as detailed in the user guide.
5. What is excluded from this warranty? Cover for any damage, malfunction or failure resulting from incorrect installation, accidental damage, misuse, abuse, incorrect configuration, mis-adjustment of user controls, tampering, un-authorized repairs, un-authorized modification by any person, acts of God, or corrosive environment are excluded under this warranty and RF Industries accept no liability for the same.
6. How to make a claim under this warranty:
 - Contact RFI Technology Solutions on 1300 000 RFI to obtain an RMA (Return Material Authorisation) number.
 - Package the product adequately, to prevent any further damage and send the product to: Warranty Department, RF Industries Pty. Ltd., 99 Station Road, Seven Hills, NSW 2147. Please ensure you clearly write the RMA number on the outside of the packaging.
 - Please include with the product, a copy of the proof of purchase and a detailed description of the fault, your contact details including phone number and return address.
7. RFI Technology Solutions may seek reimbursement of any costs incurred by them when a product is found to be in good working order.